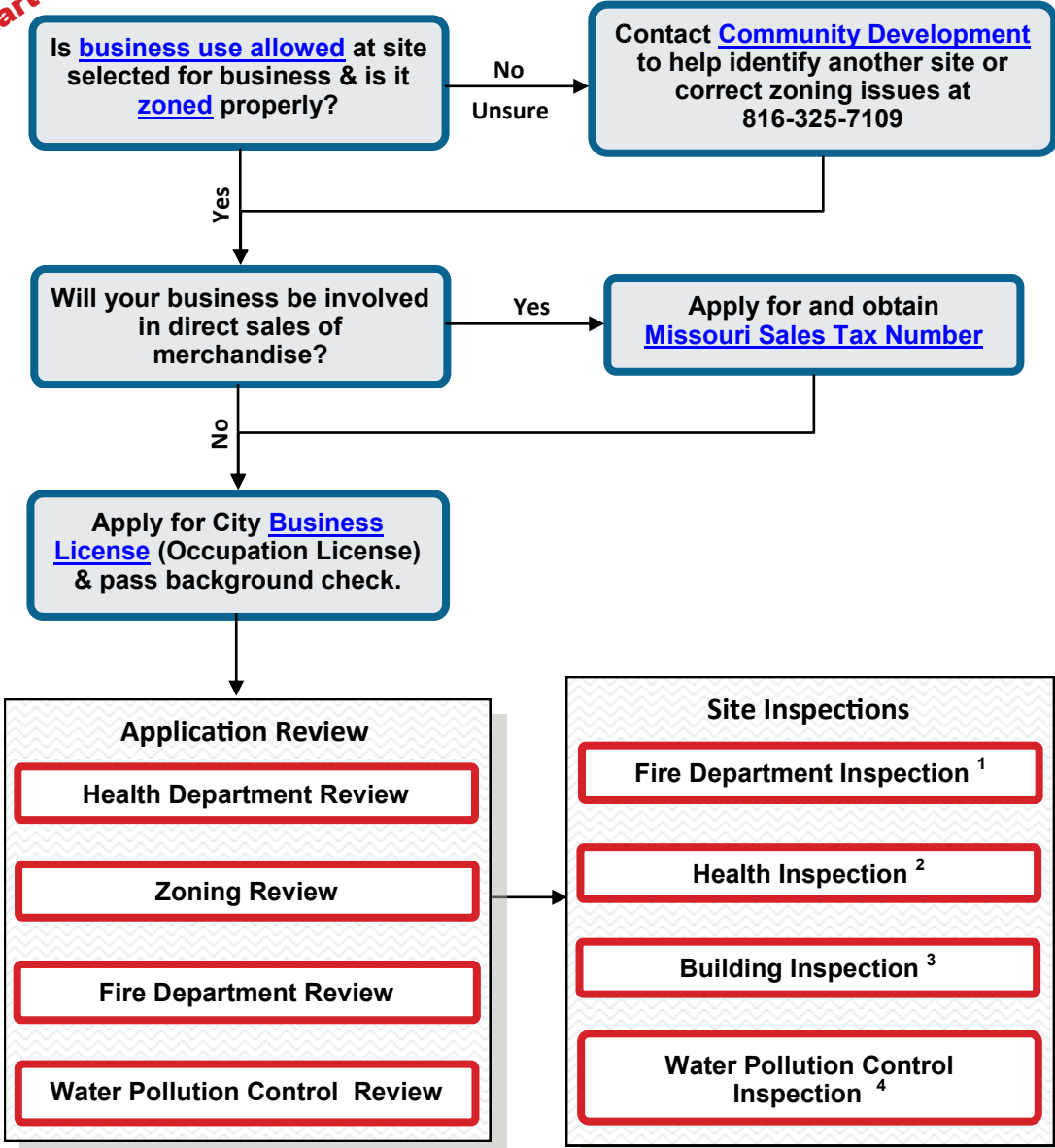




# City of Independence Business License (Occupation License) Flowchart

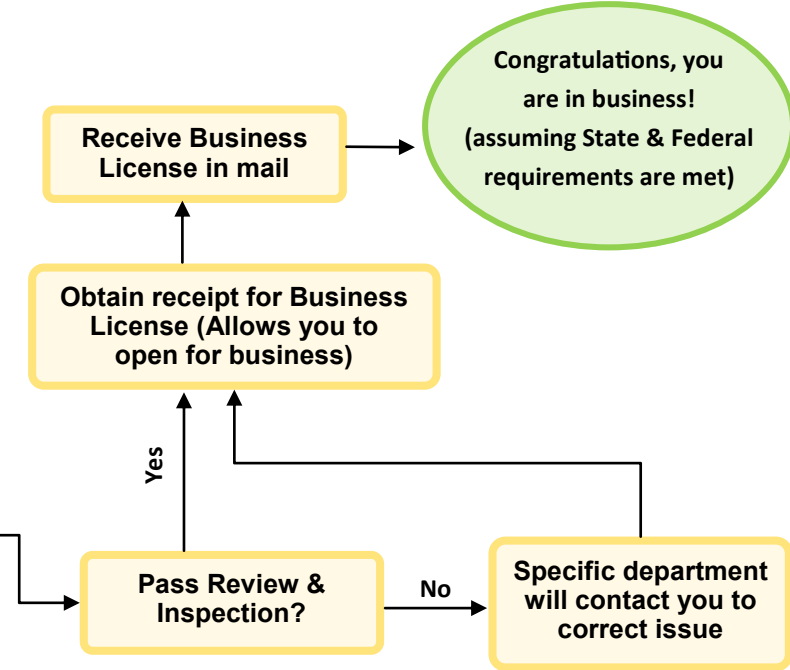
Start here



**FEE SCHEDULE**

Initial License Fee based on estimate of annual gross revenue. If the estimate ends up low, business is responsible to make up the difference.

- Gross revenue less than \$25,000 annually = License Fee \$25
- Gross revenue greater than \$25,000 annually = License Fee \$25 + \$0.29 for each \$1,000 or part over \$25,000



**Footnotes**

- All businesses
- Food establishments, daycares and other health or food related
- Home based businesses with customers present
- Special situations only