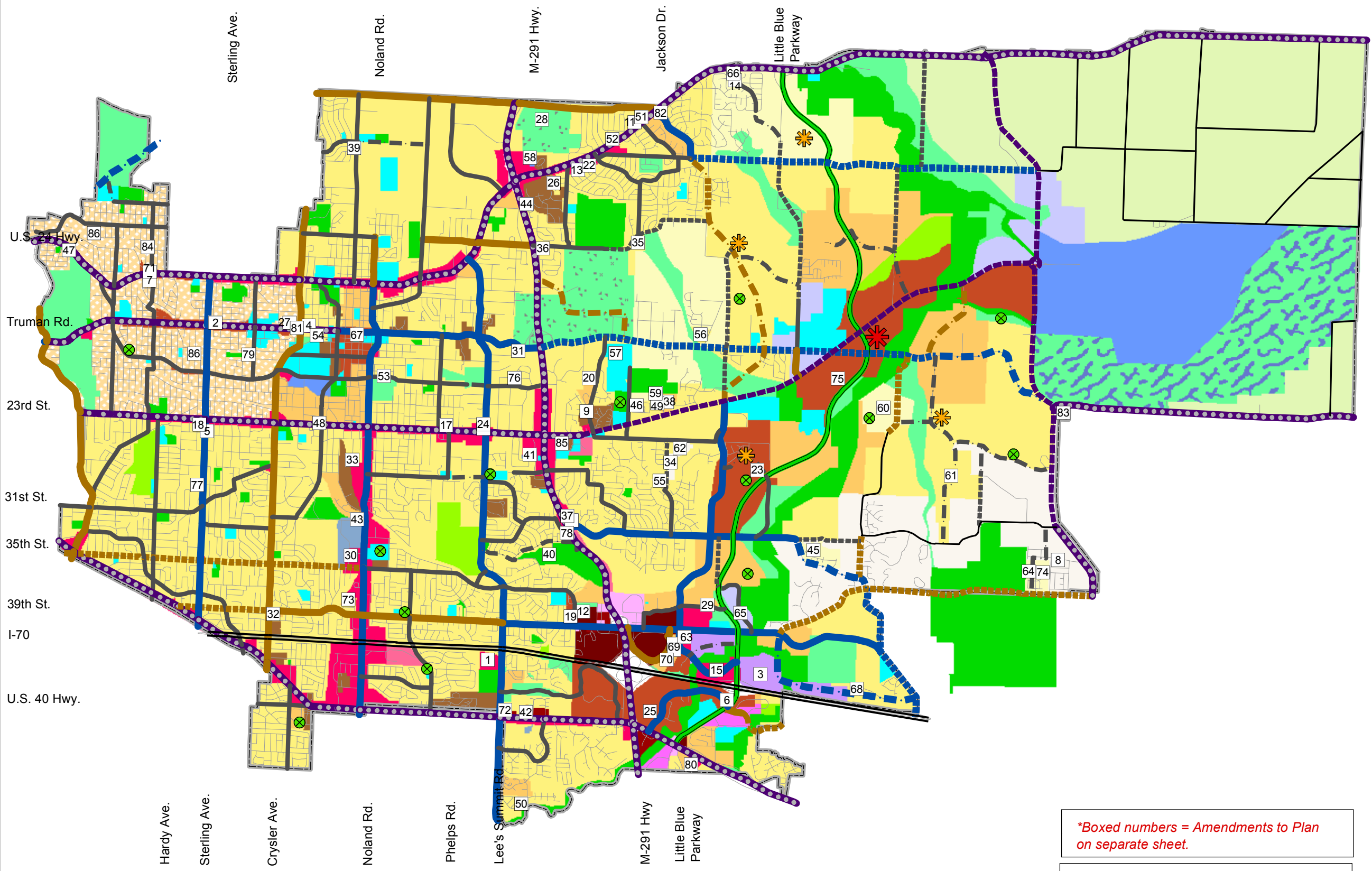


The City of Independence Comprehensive and Thoroughfare Plan



Legend

- Agricultural/Rural Res. ** Less than 0.2 d.u./AC
- Estate Density Res. **0.2 to 1.5 d.u./AC
- Neighborhood Protection Area
- Low Density Res. ** 1.5 to 3.0 d.u./AC
- Low Medium Density Res. ** 3.0 to 7.0 d.u./AC
- Medium Density Res. ** 7.0 to 14.0 d.u./AC
- High Density Res. ** Greater than 14.0 d.u./AC
- Mixed Use
- Low Density Commercial
- Commercial
- Highway Commercial
- Local Commercial
- Regional Commercial
- Office
- Office Park
- Business/Industrial Park
- Business Park
- Industrial Park
- Light Industrial
- Open Space
- Open Space/Industrial Reserve
- Open Space/Underground
- Public Parks
- Private Recreation
- Public /Semi Public Facilities

Thoroughfare

- Divided Highway
- Highway
- Highway to be Upgraded
- Little Blue Parkway
- Arterials - Major
- Arterials to be Upgraded
- Arterials Planned
- Minor Arterials
- Minor Arterials Upgraded
- Minor Arterials Planned
- Rural Minor Arterial
- Collector
- Collector to be Upgraded
- Collector Planned
- Proposed Parks
- Plan Changes
- Town Center
- Village Center

Note: **Gross Dwelling Units Per Acre

**Boxed numbers = Amendments to Plan on separate sheet.*

The City of Independence makes no warranties or guarantees with respect to GIS maps. The full GIS Disclaimer Policy is available upon request from The Community Development Dept.

Adopting Resolution #3913, July 17, 1993
 Revised Thoroughfare Plan Res. #5072, May 3, 2004,
 Revision for Density Clarification Res. #5363, June 18, 2007
 Revised Thoroughfare Plan Res. #5378, August 20, 2007
 Revised Future Land Use Plan Res. 5616, July 19, 2010
 1 inch = 5,700 feet
 City of Independence
 Community Development Dept.
 Geographic Information System (G.I.S.)